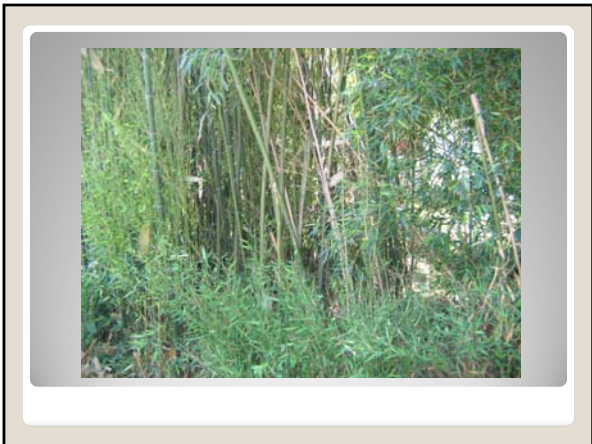


Techniques for Yardwaste Reduction

Plan your landscape appropriately

- Avoid invasive and/or messy species – trees and shrubs can produce huge amounts of waste that is difficult to dispose of on-site










Plan your landscape appropriately

- What is the ultimate size of the plant? Even nursery tags and/or literature can sometimes be misleading
- "Compact" does not necessarily mean "small" – *Euonymus alatus*



Easy maintenance

- Pruning, raking, and mowing grass can all lead to excess waste – naturalized landscapes can help reduce clean up



Pest Resistance

- Not only can treatments be environmentally harmful, but sick and dead plants create LOTS of waste



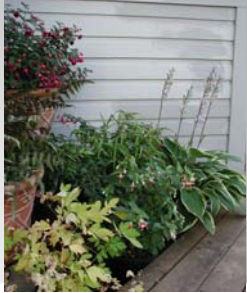
Right plant, right place!

- Perhaps most importantly is choosing plants with appropriate cultural requirements
- Do plants adapted to dry climates do best in "urban" soils?



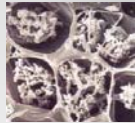
Climate

- Zonal ratings are obvious – but microclimates are less so – there can be dramatic exposure and temperature variations within just a few feet
- Plan for daily changes – not just seasonal



Improve the soil!

- My experience suggests poor soil quality causes a high percentage of plant failures - soil should be tested prior to establishing any new planting site!
- Many sites have poor soil – low fertility and biodiversity
- Clay soils often have poor drainage. Compounded by compaction



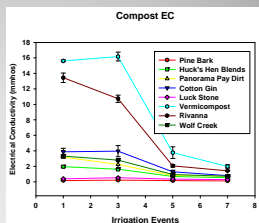
Improve the soil!

- Soil amendments – Adding organic matter can improve soil structure, fertility and biodiversity. 3-4" of O.M. for every 6" of clay soil, 1" of O.M. for every 6" of sandy loam.
- Raised beds – at least 12" deep with transition zone. Can use wood or stone materials or simply berm.



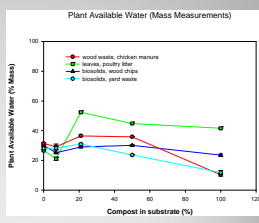
Compost, compost, compost

- Compost quality varies by feedstocks – but by composting your yard and kitchen waste you can develop a product that is highly beneficial to your plants – this becomes a cyclical waste reduction process!!



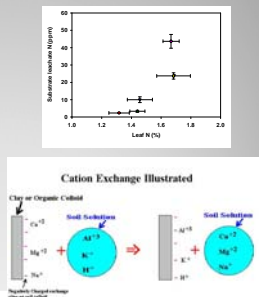
Compost benefits

- Reduces your yard waste – carbon is liberated from organic matter
- It has slowly available nutritional benefits
- Can greatly improve soil structure through the formation of aggregates
- May also improve plant establishment due to improved water relations



Compost benefits

- Compost is microbially active and can reduce disease pressures
- Reduce fertilizer inputs and groundwater contamination
- Improve CEC - Clay and high o.m. soils have higher CEC, and can be fertilized less frequently with higher rates



Pest Management

- 4 tiers of IPM
 - Set action thresholds
 - Monitor and ID pests
 - Prevention
 - Control




Pest Management

- A reduction in the impact of pests can prevent major plant losses – and reduce yard waste
- Transporting yard waste can increase pressures



Water

- We want to minimize water use – but you still must plan for it's availability or you'll end up with dead material
- Container grown plants are often particularly drought sensitive



Nutrition

- Scouting is nearly as important for nutrition as it is for pests – find the little problem before it gets big
- Know how to fix problem – adding ferts may not be the solution